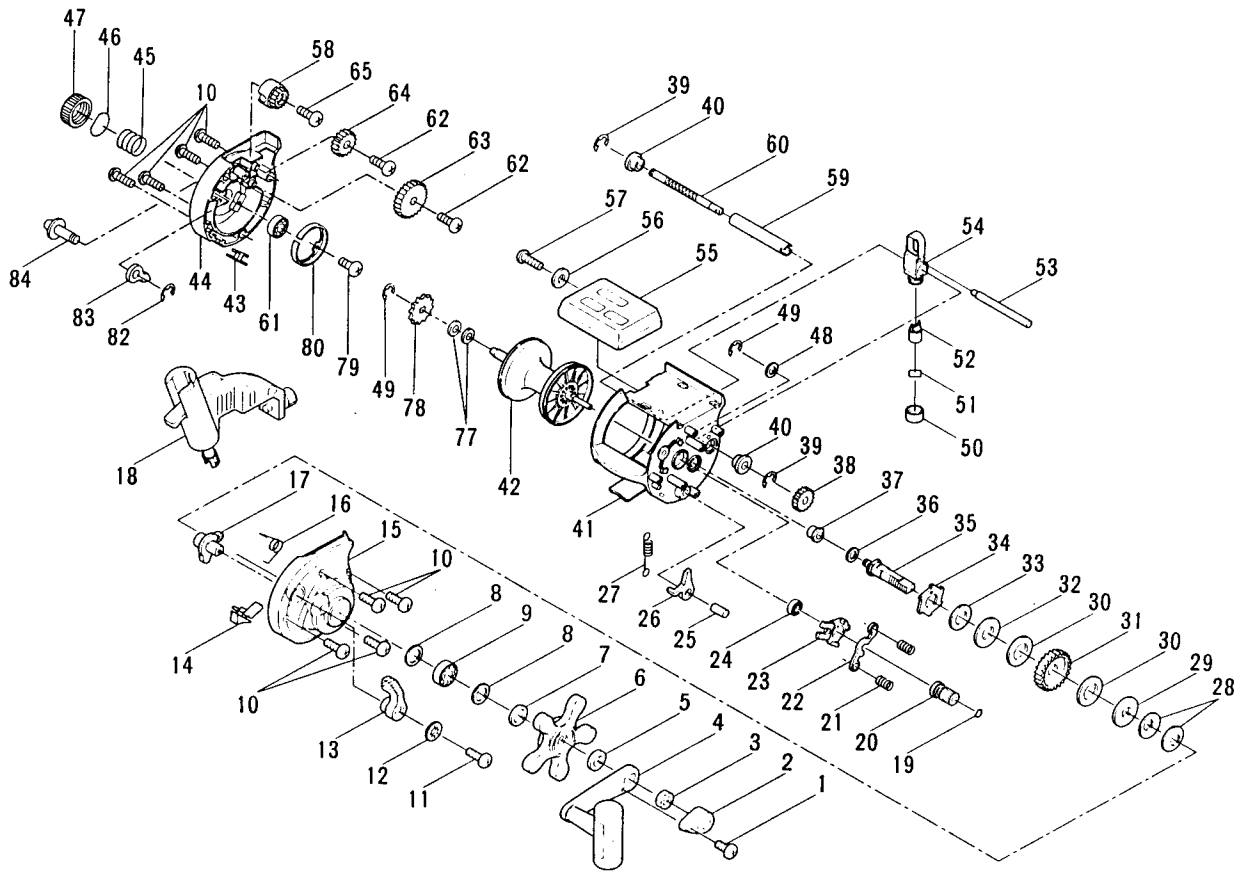




PARTS AND PRICE LIST FOR MODEL 855LC



Key No.	Part No.	Description	Price	Key No.	Part No.	Description	Price
1	32-875	Handle Lock Screw	\$.50	38	45-855	Worm Gear	\$2.5
2	110A-875	Handle Nut Cap	.90	39	42A-855	Retaining Ring (2)	.5
3	23-875	Handle Nut	1.00	40	43-855	Worm Bearing (2)	.9
4	24-855	Handle Assembly	7.45	41	183-855	Frame Assembly	15.0
5	8-875	Thrust Washer	.80	42	29-855	Spool Assembly	12.3
6	10-875	Drag Star Assembly	3.10	43	96-875	Line Storage Clip	.6
7	9-875	Spacing Washer	.90	44	27-855	L.S. Plate	5.9
8	20A-855	Bearing Spacer (2)	.40	45	41-875	L.S. Bearing Spring	.7
9	20-722	R.S. Plate Bearing	12.95	46	41C-875	Thrust Washer	.4
10	39-875	Mounting Screw (8)	.45	47	40A-875	L.S. Bearing Cap	1.5
11	22-875	Eccentric Screw	.50	48	98C-875	Gear Stud Washer	.6
12	22A-875	Eccentric Washer	.50	49	98D-875	Retaining Ring (2)	.4
13	21-855	Eccentric Lever	1.50	50	48-875	Pawl Cover Screw	1.0
14	21A-855	Direct Driver Lever	1.50	51	48A-855	Thrust Washer	.5
15	1-855	R.S. Plate	4.50	52	47-855	Pawl	3.0
16	20-855	Eccentric Spring	.50	53	58-855	Line Guide Post	1.4
17	19-875	Eccentric	4.50	54	46-855	Line Guide	4.1
18	302-875	Bogey Wheel Assembly	20.00	*55	303-855	Control Box Asm. (Feet)	65.0
19	40-855	Thrust Washer	.50	*55	303-855M	Control Box Asm. (Metric)	65.0
20	13-855	Pinion Gear Assembly	6.10	56	304-875	Flat Washer	.5
21	18-875	Clutch Spring (2)	.50	57	305-875	Control Box Screw	.4
22	12-855	Pinion Yoke	1.35	58	306-875	Control Box Gear	3.0
23	11-855	Eccentric Jack	4.50	59	50-855	Worm Shaft Shield	1.7
24	55-855	Spool Bearing	7.45	60	42-855	Worm Shaft	4.0
25	158-875	Ratchet Dog Pin	.60	61	40-320	Spool Bearing	10.6
26	15-855	Ratchet Dog	1.50	62	63B-875	Gear Mounting Screw (2)	.5
27	14-855	Dog Spring	.50	63	64A-855	Idler Gear A	1.4
28	8A-875	Disc Spring (2)	.50	64	64B-855	Idler Gear B	1.4
29	86-855	Metal Drag Washer	.70	65	63-855	Gear Mounting Screw (2)	.5
30	6-855	Drag Washer HT-100 (2)	.60	77	81A-855	Spacing Washer (2)	.4
31	5-855	Main Gear	9.00	78	78-855	Click Ratchet	1.0
32	86A-855	Metal Drag Washer	.70	79	63A-875	Mounting Screw	.4
33	4-855	Fiber Washer	.80	80	62-875	Click Spring	2.0
34	98R-855	Ratchet Assembly	4.00	82	42B-875	Retaining Ring	.5
35	98S-855	Gear Stud	5.00	83	35-875	Click Tongue	1.0
36	98A-875	Gear Stud Washer	.60	84	36-855	Click Button	3.0
37	98B-855	Gear Stud Bearing	1.00				